

2001



**2001 Fine Jersey Tee**

100% combed ring-spun cotton 30/1 fine jersey, taped shoulder to shoulder, double-needle sleeves and bottom hem.

**Weight:** 4.3 oz.

**Sizes:** XS-3XL; Style 0202AM, XS as noted below

**Colors:** Ash Grey Apricot<sup>XS</sup>, Ash Grey SeaFoam<sup>XS</sup>, Aqua<sup>XS</sup>, Army<sup>XS</sup>, Ash, Ash-White, Asphalt<sup>XS</sup>, Baby Blue<sup>XS</sup>, Black<sup>XS</sup>, Brown<sup>XS</sup>, Cranberry<sup>XS</sup>, Crème<sup>XS</sup>, Eggplant<sup>XS</sup>, Forest Green<sup>XS</sup>, Fuchsia<sup>XS</sup>, Gold<sup>XS</sup>, Grass Green<sup>XS</sup>, Heather<sup>XS</sup>, Heather Grey/White<sup>XS</sup>, Kelly<sup>XS</sup>, Lapis, Lemon<sup>XS</sup>, Light Aqua<sup>XS</sup>, Light Blue<sup>XS</sup>, Light Pink<sup>XS</sup>, Lime<sup>XS</sup>, Mauve<sup>XS</sup>, Mint<sup>XS</sup>, Navy<sup>XS</sup>, Olive<sup>XS</sup>, Orange<sup>XS</sup>, Pink<sup>XS</sup>, Poppy<sup>XS</sup>, Purple<sup>XS</sup>, Raspberry<sup>XS</sup>, Red<sup>XS</sup>, Royal<sup>XS</sup>, Seafoam<sup>XS</sup>, Silver<sup>XS</sup>, Slate<sup>XS</sup>, Sunshine<sup>XS</sup>, Teal<sup>XS</sup>, Turquoise<sup>XS</sup>, White<sup>XS</sup>

COLORS



2102



**2102 Ladies' Fine Jersey Tee**

100% combed ring-spun cotton fine jersey, taped neck and shoulders with double-needle sleeves and bottom hem.

Weight: 4.3 oz.

Sizes: S-2XL; Style 0213AM, 2X as noted below

Colors: Aqua<sup>2X</sup>, Army<sup>2X</sup>, Ash, Ash-White, Asphalt<sup>2X</sup>, Baby Blue<sup>2X</sup>, Black<sup>2X</sup>, Brown<sup>2X</sup>, Coral<sup>2X</sup>, Cranberry<sup>2X</sup>, Crème<sup>2X</sup>, Eggplant<sup>2X</sup>, Forest Green<sup>2X</sup>, Fuchsia<sup>2X</sup>, Gold<sup>2X</sup>, Grass Green<sup>2X</sup>, Heather<sup>2X</sup>, Heather Grey/White<sup>2X</sup>, Kelly<sup>2X</sup>, Lapis<sup>2X</sup>, Lavender<sup>2X</sup>, Lemon<sup>2X</sup>, Light Blue<sup>2X</sup>, Light Pink<sup>2X</sup>, Lime<sup>2X</sup>, Mauve<sup>2X</sup>, Mint<sup>2X</sup>, Navy<sup>2X</sup>, Olive<sup>2X</sup>, Orange<sup>2X</sup>, Pink<sup>2X</sup>, Poppy<sup>2X</sup>, Purple<sup>2X</sup>, Raspberry<sup>2X</sup>, Red<sup>2X</sup>, Royal<sup>2X</sup>, Sangria<sup>2X</sup>, Seafoam<sup>2X</sup>, Silver, Slate, Sunshine<sup>2X</sup>, Teal<sup>2X</sup>, Turquoise<sup>2X</sup>, White<sup>2X</sup>

2105



**2105 Toddler Fine Jersey Tee**

100% combed ring-spun cotton fine jersey, taped neck and shoulders with double-needle sleeves and bottom hem.

Weight: 4.3 oz.

Sizes: 2T, 4T, 6T; Style 0605AM

Colors: Baby Blue, Black, Fuchsia, Grass Green, Heather, Kelly, Lemon, Light Blue, Light Pink, Navy, Orange, Pink, Purple, Red, Slate, White

2201



**2201 Youth Fine Jersey Tee**

100% combed ring-spun cotton fine jersey, taped neck and shoulders with double-needle sleeves and bottom hem.

Weight: 4.3 oz.

Sizes: 8, 10, 12; Style S061AM

Colors: Baby Blue, Black, Fuchsia, Grass Green, Heather Grey, Kelly, Lemon, Light Blue, Light Pink, Navy, Orange, Pink, Purple, Red, Slate, White

**American Apparel™**

2011



NEW

**2011 Power Washed Tee**

100% fine jersey 30/1 combed cotton, loose-fitting cut and wider neck, durable rib neckband.

Weight: 4.3 oz.

Sizes: XS-XL; Style 0210AM

Colors: Black, Crème, Silver, White

COLORS



ASPHALT



BLACK



HEATHER GREY



SILVER



STEEL BLUE



CREME



WHITE

PL401



NEW

**PL401 Sublimation Tee**

100% polyester construction, durable neckband.

Weight: 4.5 oz.

Sizes: XS-2XL; Style 0200AM

Colors: White

RSA6402



NEW

**RSA6402 Sheer Jersey Loose Crew**

100% sheer jersey 40/1 combed cotton, looser-fitting cut and wider neck, durable rib neckband.

Weight: 3.8 oz.

Sizes: XS-L; Style 0211AM

Colors: Asphalt, Black, Heather Grey, Steel Blue, White



2456



**2456 Fine Jersey V-Neck Tee**

100% combed ring-spun cotton 30/1 fine jersey V-neck, taped shoulder to shoulder, double-needle sleeves and bottom hem.

Weight: 4.3 oz.

Sizes: XS-XL; Style S011AM

Colors: Ash, Ash-White, Asphalt, Black, Brown, Cranberry, Heather, Light Blue, Light Pink, Navy, Slate, White

6456



**6456 Sheer Jersey Deep V-Neck Tee**

100% combed ring-spun cotton 40/1 fine jersey deep V-neck, taped shoulder to shoulder, double-needle sleeves and bottom hem.

Weight: 3.8 oz.

Sizes: XS-XL; Style S108AM

Colors: Asphalt, Baby Blue, Black, Forest, Lapis, Light Pink, Navy, Red, White

2007



**2007 Fine Jersey Long-Sleeve Tee**

100% combed ring-spun cotton fine jersey, long-sleeve, taped shoulder to shoulder, double-needle bottom hem.

Weight: 4.3 oz.

Sizes: S-2XL; Style S002AM

Colors: Asphalt, Baby Blue, Black, Brown, Heather Grey, Navy, Pink, Red, White



BB453

**BB453 Poly Cotton 3/4 Sleeve Raglan**

50% polyester/50% combed cotton, 3/4" neck binding, contrasting collar and sleeves, overlock hem for simple lines and durability, a modern version of the traditional baseball raglan.

**Weight:** 3.7 oz.

**Sizes:** XS-XL; Style 0245AM

**Colors:** Black/Black, Black/White, Heather Lake/Blue, Light Blue/Heather, Red/Navy, White/Asphalt, White/Black, White/Brown, White/Evergreen, White/Heather Black, White/Navy, White/Orchid, White/Red, White/Sand



BB401

**BB401 Poly Cotton Short-Sleeve Tee**

50% polyester/50% combed cotton t-shirt with a slightly scooped neckline, baby rib cotton stretchable collar for increased comfort and durability, reinforced shoulder construction to maintain shape through repeated washings, durable double-needle bottom hem.

**Weight:** 3.7 oz.

**Sizes:** XS-2XL; Style 0241AM

**Colors:** Asphalt, Black, Black-Aqua, Brown, Evergreen, Gold, Heather Black, Heather Forest, Heather Lake Blue, Heather Plum, Kelly, Navy, Orchid, Pink, Red, Sunshine, White



BB301

**BB301 Women's Poly Cotton Short-Sleeve Tee**

50% polyester/50% combed cotton t-shirt with a slightly scooped neckline, baby rib cotton stretchable collar for increased comfort and durability, reinforced shoulder construction to maintain shape through repeated washings, durable double-needle bottom hem.

**Weight:** 3.7 oz.

**Sizes:** S-XL; Style 0240AM

**Colors:** Apricot, Asphalt, Black, Brown, Evergreen, Gold, Heather Black, Heather Forest, Heather Lake Blue, Heather Plum, Kelly, Navy, Orchid, Red, White

## COLORS



50% polyester/25% cotton/25% rayon, polyester retains shape and elasticity, cotton lends both comfort and durability, addition of rayon makes for a unique texture and drapes against the body for a slimming look, reinforced shoulder construction to maintain shape through repeated washings.

## COLORS



ATHLETIC BLUE



ATHLETIC GREY



BLACK



COFFEE



CRANBERRY



EVERGREEN



INDIGO



LEMON



ORCHID



RSATR412

**RSATR412** Tri-Blend Sportshirt w/Pocket

Weight: 3.7 oz.

Sizes: XS-XL; Style S177AM

Colors: Athletic Blue, Athletic Grey, Black, Indigo



TR301

**TR301** Women's Tri-Blend Short-Sleeve Track Tee

Weight: 3.7 oz.

Sizes: S-XL; Style 0253AM

Colors: Athletic Blue, Athletic Grey, Black, Coffee, Cranberry, Evergreen, Indigo, Orchid

NEW



TR401

**TR401** Tri-Blend Short-Sleeve Track Tee

Weight: 3.7 oz.

Sizes: XS-2XL; Style 0254AM

Colors: Athletic Blue, Athletic Grey, Black, Coffee, Cranberry, Evergreen, Indigo, Orchid



TR456

**TR456** Tri-Blend Short-Sleeve Deep V-Neck

Weight: 3.7 oz.

Sizes: XS-XL; Style 0257AM

Colors: Athletic Blue, Athletic Grey, Black, Cranberry, Evergreen, Indigo, Lemon, Orchid



TR476

**TR476** Tri-Blend Long-Sleeve V-Neck

Weight: 3.7 oz.

Sizes: XXS-XL; Style S140AM

Colors: Athletic Grey, Black, Indigo

American Apparel™

# COLLECTIONS

## AMERICAN APPAREL

50% polyester/25% cotton/25% rayon, polyester retains shape and elasticity, cotton lends both comfort and durability, addition of rayon makes for a unique texture and drapes against the body for a slimming look, reinforced shoulder construction to maintain shape through repeated washings.

### COLORS



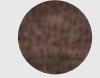
ATHLETIC BLUE



ATHLETIC GREY



BLACK



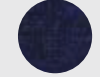
COFFEE



CRANBERRY



EVERGREEN



INDIGO



LEMON



ORCHID

TR101



**TR101** Tri-Blend Toddler Tee

Weight: 3.7 oz.

Sizes: 2T, 4T, 6T; Style 0251AM

Colors: Athletic Blue, Athletic Grey, Black, Evergreen, Indigo, Orchid

TR201



**TR201** Tri-Blend Youth Tee

Weight: 3.7 oz.

Sizes: 8, 10, 12; Style 0250AM

Colors: Athletic Blue, Athletic Grey, Black, Evergreen, Indigo, Orchid

BR394



**BR394** Tri-Blend Rib Lightweight Raglan Pullover

Weight: 3.7 oz.

Sizes: S-L; Style 0259AM

Colors: Athletic Blue, Athletic Grey, Black, Evergreen, Indigo, Orchid

TR308



**TR308** Tri-Blend Racerback Tank

Weight: 3.7 oz.

Sizes: XS-L; Style 0255AM

Colors: Athletic Grey, Black, Coffee, Cranberry, Evergreen, Indigo, Lemon, Orchid

TR408



**TR408** Tri-Blend Tank

Weight: 3.7 oz.

Sizes: XS-XL; Style 0256AM

Colors: Athletic Grey, Athletic Blue, Black, Cranberry, Coffee, Evergreen, Indigo

American Apparel™





2408



**2408 Fine Jersey Tank**

100% combed ring-spun, 3/8" trim binding on armhole and neck with double-needle bottom hem.

Weight: 4.3 oz.

Sizes: S-XL; Style S105AM

Colors: Black, White

3308



**3308 2x1 Boy Beater Tank**

100% combed ring-spun 2x1 rib cotton, 3/8" trim binding on armhole and neck with double-needle bottom hem.

Weight: 5.8 oz.

Sizes: S-2XL; Style 0411AM

Colors: Aqua, Asphalt, Baby Blue, Black, Brown, Crème, Fuchsia, Grass Green, Heather, Lemon, Navy, Olive, Pink, Red, White

3408



**3408 2x1 Rib Tank**

100% combed ring-spun 2x1 rib cotton, 3/8" trim binding on armhole and neck with double-needle bottom hem.

Weight: 5.8 oz.

Sizes: S-XL; Style S015AM

Colors: Black, White

RSA2329



**RSA2329 Racer Back Fine Jersey Tank**

100% combed ring-spun cotton 30/1 fine jersey tank

Weight: 4.3 oz.

Sizes: XS-L; Style S190AM

Colors: Ash White Stripe, Black, White

NEW



4305

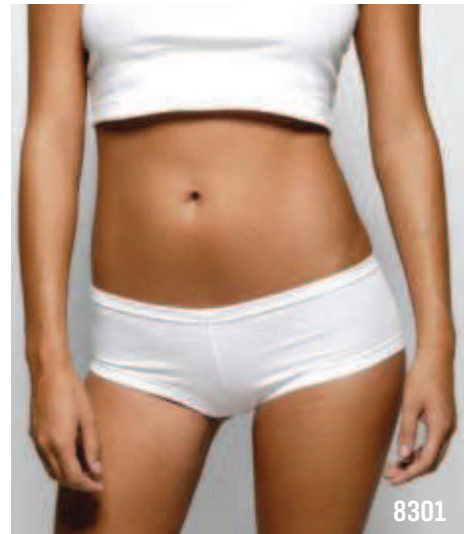
**4305 Baby Rib Basic Short-Sleeve Tee**

100% combed ring-spun 1x1 baby rib cotton, binding on neck and sleeves, double-needle bottom hem.

**Weight:** 5.8 oz.

**Sizes:** S-XL; Style 0413AM

**Colors:** Black, White



8301

**8301 Cotton Spandex Jersey Hot Shorts**

95% combed cotton/5% spandex jersey super-short, low waist, crotch liner, durable double-needle waist and leg opening.

**Weight:** 5.63 oz.

**Sizes:** S-XL; Style S052AM

**Colors:** Black, White



4311

**4311 Baby Rib Spaghetti Tank**

100% combed ring-spun 1x1 baby rib cotton, cotton binding on neck, armholes and shoulder straps.

**Weight:** 5.8 oz.

**Sizes:** S-XL; Style 0412AM

**Colors:** Black, White



4321

**4321 Baby Rib Basic Cap-Sleeve Tee**

100% combed ring-spun 1x1 baby rib cotton, double-needle bottom hem and sleeves.

**Weight:** 5.8 oz.

**Sizes:** S-XL; Style 0418AM

**Colors:** Black, White



T407

**T407 Baby Thermal Long-Sleeve Tee**

55% cotton/45% polyester micro-waffle knit super-soft fabric, Long-Sleeves with ribbed cuffs, self-trim bound-on neck, overlock bottom hem.

**Weight:** 4.8 oz.

**Sizes:** S-2XL; Style 0421AM

**Colors:** Army, Black, Brown, Heather, Light Blue, Light Pink, Navy, White



RSA2402

NEW

**RSA2402 Fine Jersey Zip Hood**

100% fine jersey cotton, matching nylon zipper, hooded with matching finished polyester drawcord, kangaroo pocket.

**Weight:** 4.3 oz.

**Sizes:** XS-XL; Style 0260AM

**Colors:** Black, White



RSA4400

NEW

**RSA4400 Baby Rib Cardigan**

100% fine ring-spun combed cotton, 1x1 baby rib Long-Sleeve cardigan with six button closure.

**Weight:** 5.8 oz.

**Sizes:** XS-L; Style S162AM

**Colors:** Black, Navy, Silver, White

**American Apparel™**



RSAF400

NEW

**RSAF400 Flex Fleece Sweatpant**

Flex fleece, 50% polyester/50% cotton, white nylon elastic quickcord, elastic waistband and leg openings.

Weight: 7.9 oz.

Sizes: XS-L; Style 0341AM

Colors: Athletic Heather, Black, Cranberry, Lapis, Navy, Purple

## COLORS



ASPHALT



ATHLETIC HEATHER



BLACK



CRANBERRY



DARK ORCHID



DEEP PINK



FOREST GREEN



LAPIS



MAUVE



MERMAID GREEN



NAVY



PURPLE



RED



SEA BLUE



SLATE



SUNSHINE



WHITE

**F497 Unisex Flex Fleece Zip Hoody**

50% poly/50% cotton fleece, hood with contrast drawcord and zipper, kangaroo pockets, matching rib waistband and cuff.

Weight: 7.9 oz.

Sizes: XS-2X; Style S104AM

Colors: Asphalt, Athletic Heather, Black, Cranberry, Dark Orchid, Deep Pink, Forest Green, Lapis, Mauve, Mermaid Green, Navy, Purple, Red, Sea Blue, Slate, Sunshine, White



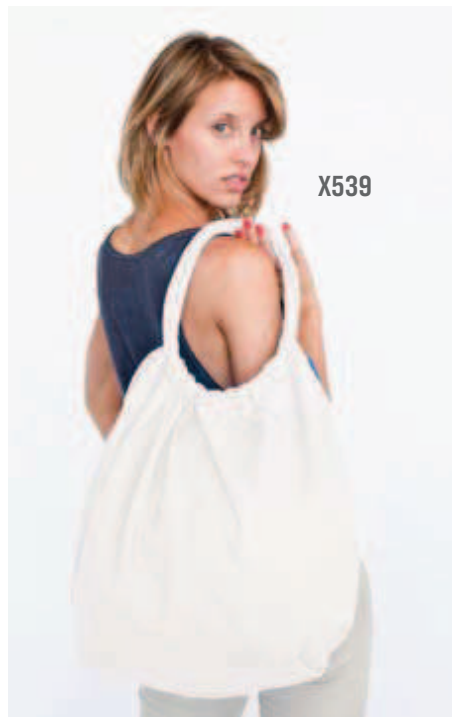
F497



**5431 Unisex California Fleece Zip Jogger**  
 100% prewashed combed cotton California fleece, color matching front zipper, muff pockets, cadet collar, ribbed cuffs and relaxed ribbed bottom band.  
**Weight:** 7.2 oz.  
**Sizes:** S-2XL; Style 0336AM  
**Colors:** Army, Asphalt, Black, Brown, Navy, Red, White



**MT497 Unisex Salt/Pepper Flex Fleece Zip Hoody**  
 50% poly/50% cotton fleece, hood with contrast draw cord and zipper, kangaroo pockets, matching rib waistband and cuff.  
**Weight:** 7.2 oz.  
**Sizes:** XS-XL; Style 0338AM  
**Colors:** Dark Ash, Peppered Grey, Zinc



**X539 LA-Z Girl Side Pocket Bag**  
 Cotton canvas extra large expandable bag. Hidden side zipper pocket.  
**Weight:** 10.0 oz.  
**Sizes:** One; Style 0800AM  
**Colors:** Black, Bone, Silver